

Power Roof Ventilator

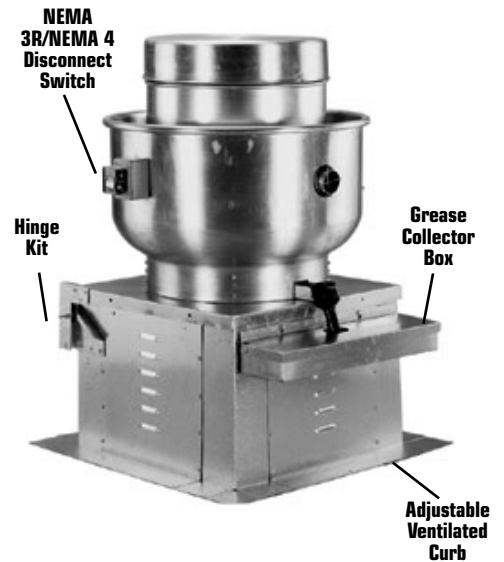
Power Roof Ventilator Accessories

NFPA96 Fixed Ventilated Curbs

Allows for quick ventilator installation and uniformity throughout the entire job. Each curb accepts several ventilator sizes. Curbs fit ventilators listed in table below.

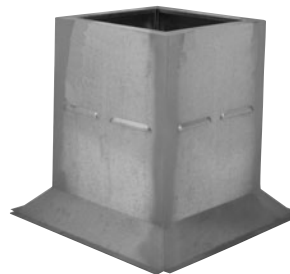
Features and Specifications

- Galvanized steel ventilated curb designed for use in commercial kitchen applications
- Self-flashing design incorporates flat mounting flange for fastening directly to the roof deck
- Stamped louvers on curb sides provide ventilation to hot exhaust ducts to protect building and roof members
- Sturdy 16-gauge construction
- Top flange surface is 1-1/2" W; base mounting flange is 3 -1/2" W

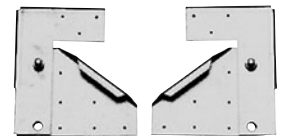


Fixed Ventilated Curbs

Model No.	Curb Height (in.)	Inside Sq. Dimensions (in.)	Outside Sq. Dimensions (in.)	Ship Wt. (Lbs.)
5ACC17VC	24	14-1/2	17-1/2	35
5ACC20VC	24	17-1/2	20-1/2	40
5ACC24VC	24	21-1/2	24-1/2	48
5ACC28VC	24	25-1/2	28-1/2	58
5ACC32VC	24	29-1/2	32-1/2	61
5ACC40VC	18	37-1/2	40-1/2	78
5ACC44VC	18	41-1/2	44-1/2	92



Fixed Curb



Hinge Kit

NFPA96 Grease Collector Box

The Grease Collector Box fastens to ventilator base. Easy to remove for cleaning. Diverts and traps heavy residual grease while protecting roof surface.

Grease Collector Box

Model No.	Length (in.)	Width (in.)	Height (in.) (less mounting flange)
5ACC00GC	14	5	4
5ACC01GC	24	7	5



Grease Collector Box

NFPA96 Hinge Kit

Model 5ACC00HK suitable for 10-1/2"-20" and model 5ACC01HK suitable for 24-1/2"-36." Allows entire fan to swing away for access to the wheel and ductwork.

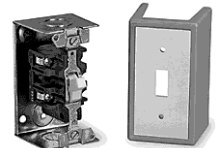
Non-Reversing Manual Switches

Provides manual "On-Off" control of single or three phase AC motors where overload protection is not required or is provided separately.

Non-Reversing Manual Switches

Model No.	Enclosure Type	Number of Poles	Amps (Resistive)	Max. HP VAC			Dimensions (in.)			Ship Wt. (Lbs.)	
				115V	230V	460-575V	Enclosure Size	Depth (in.)	Width (in.)		Height (in.)
5ACC01MS	NEMA 1	2	30	2	2	3	Std.	2-3/4	2-7/16	4-1/4	0.8
5ACC02MS	NEMA 1	3	30	2	7.5	10	Std.	2-3/4	2-7/16	4-1/4	0.9
5ACC03MS	NEMA 3R	2	30	2	2	3	Std.	3	4-2/5	5-1/2	2
5ACC04MS	NEMA 3R	3	30	2	7.5	10	Std.	3	4-2/5	5-1/2	2
5ACC05MS	NEMA 4	2	30	2	2	3	Std.	4-1/4	3	4-1/4	2.9
5ACC06MS	NEMA 4	3	30	2	7.5	10	Std.	4-1/4	3	4-1/4	2.9

NEMA 1



NEMA 3R

NEMA 4

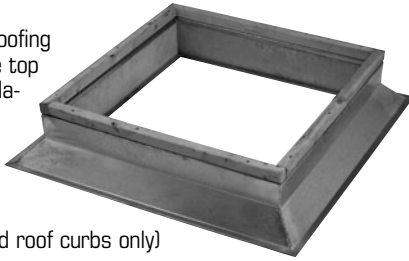


Power Roof Ventilator

Power Roof Ventilator Accessories

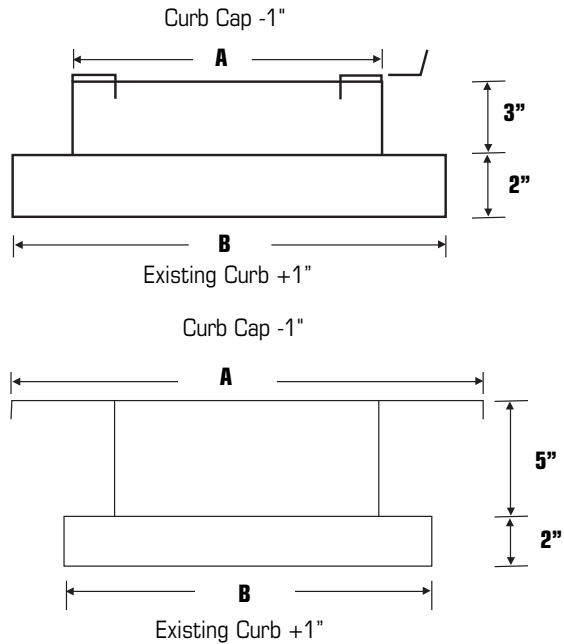
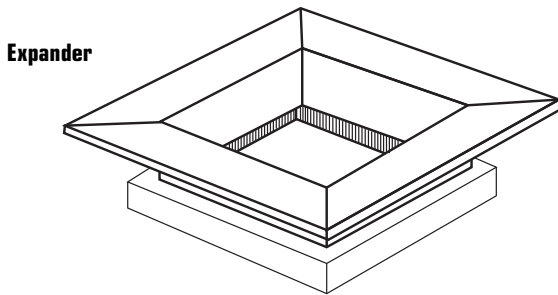
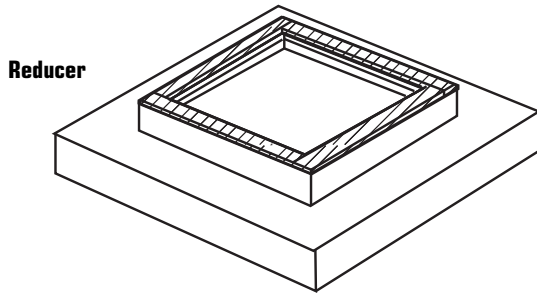
Fixed Non-Ventilated Curbs

- Heavy gauge galvanized steel
- Corners are welded construction
- Canted surface accommodates roofing material up the side and over the top of the curb for a leak-proof installation
- Fiberglass insulation deadens sound and minimizes heat loss
- Shutter flanges included
- 1-1/2" Wood nailer included (fixed roof curbs only)



Fixed Roof Curbs					
Curb Sq. O.D. (In.)	Curb Sq. I.D. (In.)	8" Height		12" Height	
		Model No.	Shipping Weight	Model No.	Ship Wt. (Lbs.)
15	12	5ACC15FS	18	5ACC15FT	102
16-1/2	13-1/2	5ACC16FS	20	5ACC15FT	102
17-1/2	14-1/2	5ACC17FS	21	5ACC17FT	27
20-1/2	17-1/2	5ACC20FS	24	5ACC20FT	32
24-1/2	21-1/2	5ACC24FS	29	5ACC24FT	38
28-1/2	25-1/2	5ACC28FS	37	5ACC28FT	47
32-1/2	29-1/2	5ACC32FS	42	5ACC32FT	54
40-1/2	37-1/2	5ACC40FS	55	5ACC40FT	70
44-1/2	41-1/2	5ACC44FS	66	5ACC44FT	83
55-1/2	52-1/2	5ACC55FS	82	5ACC55FT	102

Curb Cap Adapters



Power Roof Ventilator

Power Roof Ventilator Accessories

Variable Speed Controllers for UL 705 Applications

WARNING: Not for use with any kitchen exhaust application. Not for use in NFPA '96 applications.

- Variable speed controller permits adjustment of air movement from 100% to approximately 50%
- Rated 120V, 60 Hz
- Can be used to operate more than one fan, if the combined total amps do not exceed the control rating
- Controls are suitable and intended only for use with ventilators listed on pages 5, 27, 29, 53 and 55
- UL Listed when used in combination with ventilators listed on pages 5, 27, 29, 53 and 55



Speed Controller

Variable Speed Controllers for UL 705 Applications

Model No.	Max. AMPS	Ship Wt. (Lbs.)
5ACC03SC†	3.0	0.3
5ACC05SC†	5.0	0.3
5ACC06SC	6.0	0.3
5ACC10SC†	10.0	0.8

Used for multiple fan control with aggregate draw less than 3, 5, 6 or 10 amps, respectively.

† CSA-approved controllers.

Filters

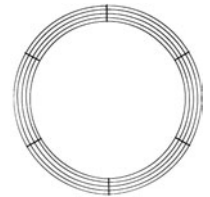
- Specification – 60% average arrestance @ 350 FPM, 50% @ 70 FPM
- Minimum micron allowable – 10
- Rust-proof, corrosion-resistant filter media UL Class 2 filter requirement
- Meets ASHRAE 52-76 test conducted using a synthetic dust

Model No.	Filter Dimensions	No. of Filters Required by Model No.				
		5FSU10	5FSU12	5FSU15	5FSU18	5FSU20
5ACC01AF	25 x 17 x 0.88	—	1	1	—	—
5ACC02AF	25 x 20 x 0.88	—	1	1	—	—
5ACC03AF	28 x 20 x 0.88	1	—	—	—	—
5ACC04AF	30 x 20 x 0.88	—	—	—	1	—
5ACC05AF	30 x 23 x 0.88	—	—	—	1	—
5ACC06AF	35 x 25 x 0.88	—	—	—	—	2

Bird Screens

- Nickel-chrome plated for durability
- Concentric ring bird screen precisely sized to eliminate any rattling

Bird Screens		
Model No.	Dia. (In.)	Ship Wt. (Lbs.)
5ACC10BS	10-1/2	2.5 lbs.
5ACC12BS	12-1/4	2.5 lbs.
5ACC13BS	13-1/2	2.5 lbs.
5ACC15BS	15	3.0 lbs.
5ACC16BS	16-1/2	3.5 lbs.
5ACC18BS	18-1/4	3.5 lbs.
5ACC20BS	20	5.0 lbs.
5ACC24BS	24-1/4	5.0 lbs.
5ACC30BS	30	6.0 lbs.
5ACC36BS	36-1/2	13.0 lbs.



Bird Screen

Power Roof Ventilator

Power Roof Ventilator Accessories

Backdraft Dampers

For direct-drive and belt-drive centrifugal roof and wall ventilators. Blades open when ventilator comes on, close when airflow stops.

WARNING: Not for use with any kitchen exhaust application.

Wall Mount Dampers

- Extruded aluminum frame, 16-gauge
- Frame is 1- 1/2"; deep with 1- 3/8" flange
- Aluminum blades have felted edges for quiet operation
- Pre-punched mounting holes in frame
- Accessory Damper Motor—5ACCO5DM



Wall Damper

Roof Mount Dampers

- Galvanized 19-gauge steel frame
- Frame is 2" deep with 1" flange
- Aluminum blades have felted edges for quiet operation
- Pre-punched conduit hole knock-out
- Accessory Damper Motor—5ACCO4DM



Roof Damper

Wall Mount Backdraft Dampers

Wall Model No.	Damper Size (In.)	Outside Flange Dimension (In.)	Ship Wt. (Lbs.)	For Use with These Ventilator Model No. (UL 705 Only)	Recommended Wall Opening (In.)
5ACCO8WD	8 x 8"	10-3/4 x 10-3/4	4	—	8-1/2 x 8-1/2
5ACC10WD	10 x 10	12-3/4 x 12-3/4	5	5DDW10	10-1/2 x 10-1/2
5ACC11WD	11 x 11	13-3/4 x 13-3/4	5	5DDW12	11-1/2 x 11-1/2
5ACC12WD	12 x 12	14-3/4 x 14-3/4	6	5DDW13	12-1/2 x 12-1/2
5ACC13WD	13 x 13	15-3/4 x 15-3/4	6	5DDW15	13-1/2 x 13-1/2
5ACC14WD	14 x 14	16-3/4 x 16-3/4	7	5DDW16	14-1/2 x 14-1/2
5ACC15WD	15 x 15	17-3/4 x 17-3/4	7	5DDW18	15-1/2 x 15-1/2

Roof Mount Backdraft Dampers

Roof Model No.	Damper Size (In.)	Outside Flange Dimension (In.)	Ship Wt. (Lbs.)	For Use with These Ventilator Model No. (UL 705 Only)	Recommended Roof Opening
5ACC12RD	12 x 12	14 x 14	4	5BDU10, 5DDU10, 5ADE10, 5BDD10, 5DDD10	12-1/2 x 12-1/2
5ACC15RD	15 x 15	17 x 17	6	5BDU12, 5DDD08, 5DDU08, 5BDU13, 5DDU12, 5DDU13, 5ADE12, 5ADE14, 5BDD12, 5BDD13, 5DDD12, 5DDD13	15-1/2 x 15-1/2
5ACC15SD	15 x 15	17 x 17	6	5ADS12, 5ADS14	15-1/2 x 15-1/2
5ACC19RD	19 x 19	21 x 21	7	5BDU15, 5BDU16, 5DDU15, 5DDU16, 5ADE16, 5ABE18, 5BDD15, 5BDD16, 5DDD15, 5DDD16, 1RHE24	19-1/2 x 19-1/2
5ACC19SD	19 x 19	21 x 21	7	5ADS16, 1RHS24	19-1/2 x 19-1/2
5ACC23RD	23 x 23	25 x 25	9	5BDU18, 5BDU20, 5DDU18, 5ADE18, 5BDD18, 5BDD20, 5DDD18	23-1/2 x 23-1/2
5ACC23SD	23 x 23	25 x 25	9	5ADS18, FSU10	23-1/2 x 23-1/2
5ACC27RD	27 x 27	29 x 29	13	5BDU24, 5ADE20, 5ADE24, 5ABE24, 5BDD24, 1RHE30	27-1/2 x 27-1/2
5ACC27SD	27 x 27	29 x 29	13	5ADS20, 5ADS24, 5FSU12, 5FSU15, 1RHS30	27-1/2 x 27-1/2
5ACC30RD	30 x 30	32 x 32	12	1RHE30	30-1/2 x 30-1/2
5ACC30SD	30 x 30	32 x 32	12	1RHS36	30-1/2 x 30-1/2
5ACC35RD	35 x 35	37 x 37	20	5BDU30, 5ABE30, 5BDD30	35-1/2 x 35-1/2
5ACC35SD	35 x 35	37 x 37	20	5FSU18	35-1/2 x 35-1/2
5ACC39RD	39 x 39	41 x 41	26	5BDU36, 5ABE36, 5BDD36	39-1/2 x 39-1/2
5ACC39SD	39 x 39	41 x 41	26	1RHS42, FSU20	39-1/2 x 39-1/2
5ACC48RD	48 x 48	50 x 50	25	1RHE48	48-1/2 x 48-1/2
5ACC49SD	48 x 48	50 x 50	25	1RHS48	48-1/2 x 48-1/2
5ACC50RD	50 x 50	52 x 52	34	5BDD49	50-1/2 x 50-1/2